

# **How to Use the Early Warning System Middle Grades and High School Tools to Keep Students On Track for Graduation**

---

## **National High School Center**

Facilitator: Mindee O’Cummings, Ph.D.

Presenters:

Matt Hauenstein

Michelle Perry

Laura Yerhot

December 7, 2011

# Agenda

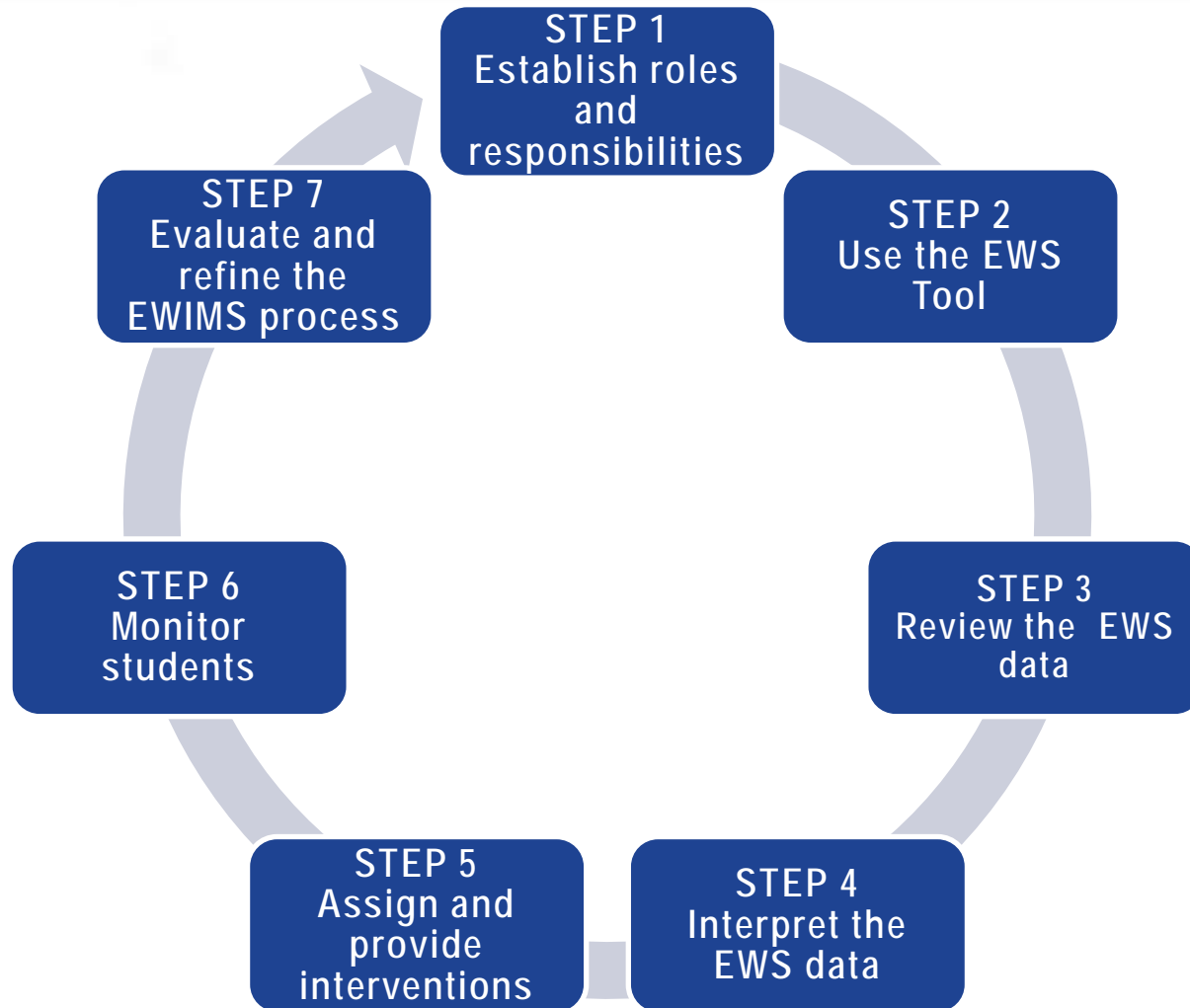
- Welcome
- Overview of the early warning system (EWS) background and research base
- EWS Middle Grades Tool Demonstration
- EWS High School Tool Demonstration
- Introduction to the EWS Community of Practice
- Q&A

# Early Warning Systems

Early warning systems (EWS) rely on readily available data housed at the school to:

- Predict which students are at-risk for dropping out of high school
- Target resources to support off-track students while they are still in school, before they drop out
- Examine patterns and identify school climate issues

# EWIMS Seven-Step Implementation Process



# Key EWS Indicators

## Engagement

- Attendance/absenteeism

## Course Performance

- Course grades
- Number of credits earned
- GPA

## Behavior

- Suspensions
- Referrals

**Research from several U.S. school districts provides a strong foundation for defining early warning signs that students might drop out, but local adaptation is key.**

# EWS Indicators: Middle Grades and High School Thresholds

Indicators	Thresholds	
	Middle Grades	High School
<b>Incoming Indicator</b>	Previous year EWS Tool exit indicator or locally validated indicators of risk	
<b>Attendance</b>	Missed 20% or more of instructional time	Missed 10% or more of instructional time
<b>Course Performance</b>	Failure in an English language arts or mathematics course	Failure in one or more courses
		Earned 2.0 or lower GPA (on a 4-point scale)
<b>Behavior</b>	Locally validated thresholds	
<b>End of Year Indicator</b>	EWS exit indicator or locally validated indicators of risk	

# EWS Tool Features

Features	Middle Grades	High School
Customize the tool settings to reflect the local context	New	X
Integrate locally validated incoming indicators	New	New
Modify the benchmarks/thresholds	New	X
Identify at-risk students based on a locally defined behavior indicator	New	New
Identify at-risk students based on a kindergarten cut-off date	New	--
Import and export student-level data	New	Enhanced
Group students with a customizable cohort variable	New	New
Assign and monitor student interventions over time	New	X
Produce reports including student- and school-level data summaries	New	X

# EWS Middle Grades and High School Tools Demonstration

---

## Presenters

Matt Hauenstein

and

Michelle Perry



# Introduction to the EWS Community of Practice

---

**Presenter**

Laura Yerhot

# Early Warning Systems Community of Practice

- Launching today, December 7<sup>th</sup>!!!
- Online community for EWS practitioners and interested parties
- Participate in interactive:
  - Discussions surrounding EWS technical and implementation
  - Blogs
  - Documents and Resources
  - Polls to see how others use EWS technology or implementation
  - Events related to EWS

# Join the EWS CoP!

- <http://community.betterhighschools.org/>
  - Complete the “Join and Learn More” form.
  - Receive an email containing your password from [nhsccommunity@air.org](mailto:nhsccommunity@air.org)
  - Click the Early Warning Systems group on the community home page and then click “Join”
- Questions or comments: [EWS@betterhighschools.org](mailto:EWS@betterhighschools.org)

- **Upcoming EWS Webinar**
  - **December 14, 2011, 3–4pm ET**  
*Stories from the Field: Putting EWS into Practice*
- **Online EWS Community of Practice**
- **EWS products, tools and more:**
  - <http://www.betterhighschools.org/ews.asp>
- **Additional questions, email us at**  
**EWS@betterhighschools.org**

# Questions?

---

For more information on the National High School Center,  
please visit us online at  
[www.betterhighschools.org](http://www.betterhighschools.org)

Follow us on Twitter @NHSCatAIR  
Become our Fan on Facebook